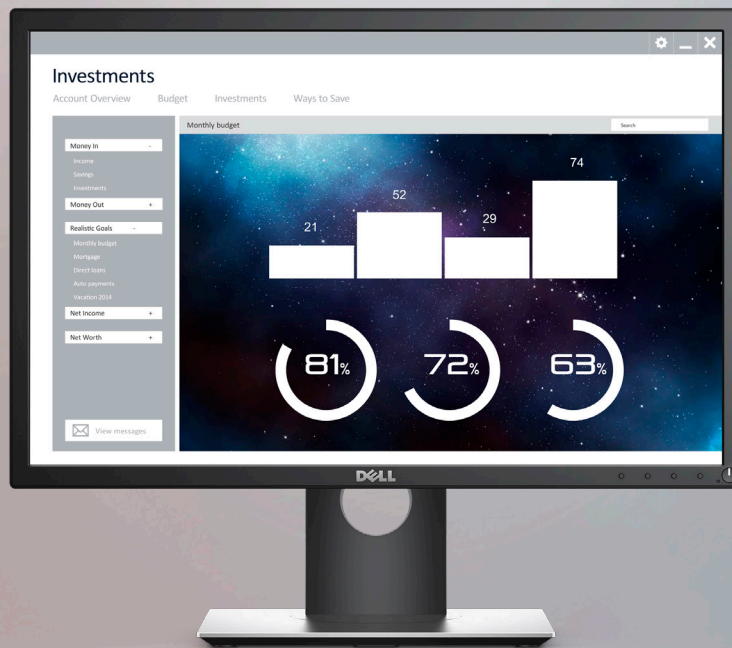




Get a productivity upgrade

DELL 22 MONITOR | P2217



ENHANCED PRODUCTIVITY

Transform the way you work with this 22" monitor specifically configured for multiple connectivity and advanced efficiency.



IMPROVED COMFORT

Designed for comfort and convenience, this 22" 16:10 aspect ratio monitor offers a high dynamic color contrast and a flicker-free viewing experience.



ECO-ELEGANT DESIGN

This eco-friendly chassis design is not only slim and seamless, it also meets the latest regulatory and environmental standards such as ENERGY STAR®, EPEAT® registered where applicable¹, TCO Certified Displays, CEL, CECP.



TRUSTED RELIABILITY

As the world's #1 monitor brand*, we take pride in our unyielding commitment to quality and the utmost satisfaction of our customers.

Maximize comfort and convenience



ENHANCED PRODUCTIVITY

Enjoy a better visual experience: The slim border design creates a seamless workflow with less visual obstruction when working across multiple monitors.

Auto Mode and PowerNap: Efficiently auto-apply predefined color settings for various applications via **Dell Auto Mode** and conserve power while you're away from your desk with **PowerNap**.

Connect to productivity: Multiple connectivity ports allows you to easily connect to various devices.



IMPROVED COMFORT

Adjust to your comfort: Pivot, tilt, swivel and adjust the height of your monitor for a comfortable setup all day long. Or choose from a variety of mounts and stands, including VESA, for even more flexibility.

Work comfortably with less stress: Dell's ComfortView² feature helps reduce harmful blue light emission onscreen and with direct current, a flicker-free viewing experience is enabled.

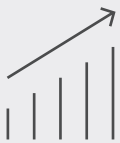
Stunning colors at every angle: A wide viewing angle enabled by In-Plane Switching (IPS) technology lets you see vibrant colors — no matter where you sit.



ECO-ELEGANT DESIGN

Reduce your carbon footprint: Dell's eco-conscious design meets the latest regulatory and environmental standards such as ENERGY STAR[®], EPEAT[®] registered where applicable¹, TCO Certified Displays, CEL, CECF.

Designed with the environment in mind: This 22" monitor is BFR/PVC-free monitor (except external cables). It is also manufactured with arsenic-free glass and mercury-free LED panel with more than 25% post consumer plastics in its chassis.



DELL DISPLAY MANAGER

More ways to multitask: Work conveniently across multiple screens and select from predefined templates with the **Easy Arrange** feature on Dell Display Manager software. Quickly tile and arrange your applications and get back to work faster with **Auto-restore**, a feature that remembers where you left off.

Easily optimize your view: Automode easily configures display settings for a great front of screen experience.

Manage your display inventory: Generate an asset management report to tag display ID and settings within your business environment.



THANK YOU FOR MAKING DELL MONITORS #1 WORLDWIDE*

Peace of mind: Dell Premium Panel Exchange³ allows a free panel replacement during the Limited Hardware Warranty⁵ period even if only one bright pixel is found.

Minimize downtime: Your monitor comes with a 3-year Advanced Exchange Service⁴ so that if a replacement becomes necessary, it will be shipped to you the next business day during your 3-year Limited Hardware Warranty.⁵

Get a higher level of support: Upgrade to 24x7, in-region technical phone support from qualified engineers with Dell ProSupport option.⁶

Features & Technical Specifications

Monitor

Diagonal Viewing Size	Dell 22 Monitor – P2217 55.9 cm (22 inches)
Active Display Area	
Horizontal	473.76 mm (18.65 inches)
Vertical	296.10 mm (11.66 inches)
Maximum Preset Resolution	1680 x 1050 at 60 Hz
Aspect Ratio	16:10
Pixel Pitch	0.282 mm x 0.282 mm
Brightness	250 cd/m ² (typical)
Color Support	Color Gamut (typical) 84% ⁷ Color Depth: 16.7 million colors
Contrast Ratio	1000:1 (typical)
Mega Dynamic Contrast Ratio	4 million:1
Viewing Angle	160°/170°
Response Time	5 ms black to white (typical)
Panel Type	TN
Backlight Technology	LED
ComfortView with Flicker-free screen	Yes
Dell Display Manager Compatibility	Yes
Speakers (optional)	Dell Speaker Bar AC511
Bezel color	Black

Connectivity

Connectors	DisplayPort 1.2, HDMI 1.4, VGA, 2 x USB 3.0 (side), 2 x USB 2.0 (bottom)
------------	--

Design Features

Adjustability	Height-adjustable stand (130 mm), Tilt (-5° to 21°), Swivel (45°), Pivot (90°)
Security	Security lock slot (security lock not included)
Flat Panel Mount Interface	VESA mounting support (wall mount sold separately) 100 mm x 100 mm

Power

AC input voltage/frequency/current	100 to 240 VAC / 50 or 60 Hz ± 3 Hz / 1.5 A (typical)
Power Consumption (Operational)	18 W (typical, without USB load); 45 W (Max.)
Power Consumption Stand by / Sleep	Less than 0.3 W

Dimensions (with stand)

Height (Compressed ~ Extended)	367.4 mm ~ 497.4 mm (14.46 inches ~ 19.58 inches)
Width	503.4 mm (19.82 inches)
Depth	180.0 mm (7.09 inches)

Weight

Weight (panel only – no stand)	3.00 kg (6.61 lb)
Weight (with stand)	5.33 kg (11.75 lb)
Shipping Weight	7.03 kg (15.49 lb)

Standard Service Plan

3 Years Advanced Exchange Service⁴, 3 Years Limited Hardware Warranty⁵, 3 years Premium Panel Exchange³

Optional Service Plan

Dell ProSupport⁶

Environmental Compliance

ENERGY STAR[®], EPEAT[®] registered where applicable¹, TCO Certified Displays, CEL, CECP, RoHS, WEEE, ErP (EuP) Standards, Korea E-Standby

What's in the box?

Components

- Monitor panel
- Stand (riser and base)

Cables

- Power cable (varies by country)
- VGA
- DisplayPort
- USB 3.0 upstream cable

Documentation

- Quick Setup Guide
- Safety and regulatory information
- Drivers and documentation media (CD)

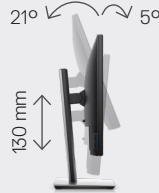
Adjustability and connectivity

DELL 22 MONITOR | P2217

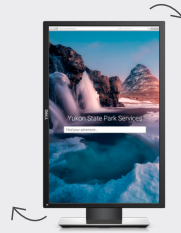
Easily adjust the panel to your preferred viewing position.



Back view -
Cable management slot



Tilt and height adjustable



Pivot



Swivel

Connectivity



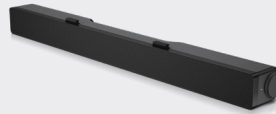
- | | | |
|-------------------|----------------------|---------------------------------|
| 1 Power connector | 4 VGA connector | 7 USB 3.0 downstream ports (x2) |
| 2 HDMI port | 5 USB upstream port | 8 Stand lock feature |
| 3 DisplayPort | 6 USB 2.0 downstream | |

RECOMMENDED ACCESSORIES



DELL DUAL MONITOR
STAND | MDS19

Enjoy toolless monitor installation with Quick Release and the flexibility to pivot, tilt, swivel and adjust the height of each monitor independently. Features a small footprint and neat cable management.



DELL SOUNDBAR | AC511

Get stereo surround sound with the Dell soundbar. Snap it snugly onto the bottom of the monitor to enjoy high quality audio



DELL WIRELESS KEYBOARD
AND MOUSE | KM636

Keep your workspace tidy and cable-free with a wireless combo. Pair up to 6 devices with Dell Universal Pairing

* Dell monitors are #1 Worldwide for 6 consecutive years (2013 to 2018)! Source: IDC Worldwide Quarterly PC Monitor Tracker, Q4 2018.

1 EPEAT registered where applicable. EPEAT registration varies by country. See www.epeat.net for registration status by country.

2 ComfortView, a feature that reduces up to 60% of harmful blue light emissions, help optimize eye comfort over extended viewing periods.**

Disclaimer - **Available on select Dell E, P and U series monitors. Based on Dell internal analysis, August 2018. Actual blue light reduction will vary by model.

3 The Dell Premium Panel Exchange allows a free panel replacement during the Limited Hardware Warranty even if only one bright pixel is found. Source: <https://www.dell.com/learn/us/en/04/campaigns/dell-premium-panel-guarantee>

4 Advanced Exchange: Dell will send you a replacement monitor the next business day in most cases, if deemed necessary after phone/online diagnosis. Shipping times may vary by location and for monitors 55" and above. Fee charged for failure to return defective unit. See dell.com/servicecontracts/global.

5 For a copy of the Limited Hardware Warranty, write to Dell USA LP, Attn: Warranties, One Dell Way, Round Rock, TX 78682 or see dell.com/warranty.

6 Availability varies, please visit www.dell.com/support for details.

7 Color gamut (typical) is based on CIE1976 (84%) and CIE1931 (72%) test standards.

Dell.com/monitors Product availability varies by country. Please contact your Dell representative for more information.

© 2019 Dell. All rights reserved.

Trademarks or trade names may be used in this document to refer to either the entities claiming the marks and names of their products. Dell disclaims proprietary interest in the marks and names of others. Reproduction in any manner whatsoever without express written permission from Dell is strictly forbidden.

